

SECTION 3. PARTS

3-1. GENERAL

This section contains the parts drawing and parts list for the IMT 210HP Bead Breaker.

3-2. ORDERING REPAIR PARTS

To order parts:

1. Give the model number.
2. Give the serial number located on the Bead Breaker.
3. Give the part number, description and quantity required.

Place your order with Iowa Mold Tooling Co., Inc., Box 189, Garner, IA 50438, telephone 641-923-3711, Fax 641-923-2424; or your nearest distributor.

ASSEMBLY REQUIREMENTS

(ITEM NUMBERS REFERENCED TO PARTS LIST)

- | ITEM | ASSEMBLY REQUIREMENT |
|------|--|
| 1. | TORQUE 30-40 FT-LBS. |
| 3. | TORQUE 125-140 FT-LBS. |
| 4. | LUBRICATE BEFORE ASSEMBLY. |
| 9. | TORQUE 40-50 IN-LBS,
APPLY LOCTITE® TO THREADS. |
| 13. | TORQUE 90-110 IN-LBS. |
| 15. | TORQUE 90-110 IN-LBS. |
| 22. | TORQUE 42-48 FT-LBS,
APPLY LOCTITE® TO THREADS. |
| 29. | TORQUE 25-40 FT-LBS. |
| 38. | TORQUE 175-225 FT-LBS. |
| 47. | TORQUE 80-90 FT-LBS. |

SEE FOLLOWING PAGE FOR DRAWING

ITEM PART NO.	DESCRIPTION	QTY
1. 72060066	CAP SCR 7/16-14X2 HH GR5	1
2. 7Y036949	STRAP PIVOT HANDLE	1
3. 70144173	CLAMP CYLINDER	1
4. 7Y201360	SPRING RETAINER	4
5. 7Q072220	O-RING (PART OF 50)	1REF
6. 7Q10P220	BACK-UP WASHER(PART OF 50)	1REF
7. 7Y201430	SPRING	1
8. 7Y017160	WASHER	1
9. 72060562	SET SCR 1/4-20X1 SH	1
10. 72066435	BALL 3/16 DIA SS	1
11. 76393561	DECAL -SER NO	1
12. 70144175	BODY	1
13. 72060708	CAP SCR 1/4-20X1-1/4 SH	2
14. 70024221	WASHER-COPPER (PART OF 50)	3REF
15. 72060907	CAP SCR 1/4-20X3-1/2 SH	1
16. 7R13P015	ROD WIPER (PART OF 50)	1REF
17. 7R535015	U-CUP (PART OF 50)	2REF
18. 70393569	CLAMP ROD	1
19. 72066560	RETAINING RING "E" 5/8	4
20. 70144172	STRAP	2
21. 7Y205288	PIN	1
22. 72060753	CAP SCR 3/8-16X1 SH	2
23. 7Y204238	SPACER	2
24. 70144174	JAW	1
25. 72060985	SET SCR 3/8-16X1/2 SHCUPPT	1

ITEM PART NO.	DESCRIPTION	QTY
26. 72060983	SET SCR 3/8-16X3/8 SHCONEPT	1
27. 7Y036853	CLAW	1
28. 72066319	ROLL PIN 3/8X2-1/4	1
29. 7Y021599	VALVE SPRING CAP	1
30. 70024222	WASHER-COPPER(PART OF 50)	1REF
31. 7Y016724	SPRING	1
32. 72066437	BALL 1/4 DIA SS	2REF
33. 72062024	NUT 1/2-13 HEX JAM	1
34. 7Y202636	HANDLE	1
35. 7Y202625	SPRING	1
36. 7Q072224	O-RING (PART OF 50)	1REF
37. 7Q10P224	BACK-UP WASHER(PART OF 50)	1REF
38. 72533288	BREAKER CYLINDER HEAD	1
39. 70393570	BREAKER ROD	1
40. 7Y204237	RETAINING RING	1
41. 7Y204236	BEARING	1
42. 7Y201433	RETAINING RING	1
43. 72533286	REDUCING NIPPLE	1
44. 76393572	ROD WIPER (PART OF 50)	1REF
45. 72533616	STREET ELBOW 45°	1
46. 70143089	TOOTH	2
47. 72060794	CAP SCR 1/2-13X1-1/4 SH	4
49. 72533287	COUPLER - QUICK DISC F	1
50. 94393571	SEAL KIT (INCL:5,6,14,16,30,36,37,44)	1

FIGURE C-1. BEAD BREAKER - 210HP (79075107)

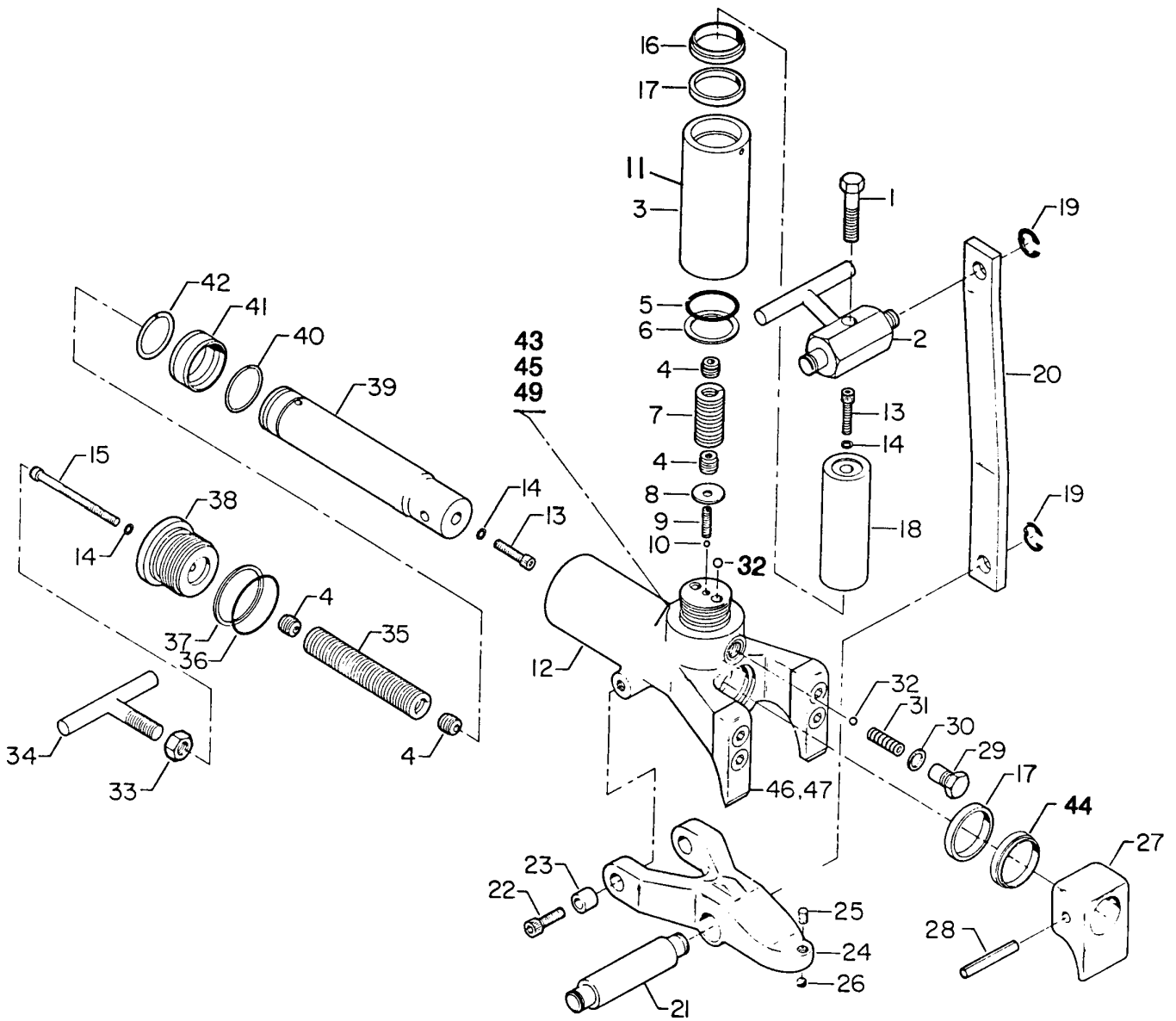


FIGURE C-1A. BEAD BREAKER - 210HP (79075107)