



SPECIALTY PRODUCTS

FORD 4WD CAMBER/CASTER SLEEVE

By installing the #23100 series sleeves you can change camber, caster or both at the same time. Simply remove the tire, cotter pin and upper ball joint stud nut and break the taper free between the stud and sleeve.



APPLICATIONS: Ford 4WD: 1980 & up F250, F350, E250, E350, full size Bronco w/ ball joints
Ford 4WD: 1980 - 96 F150, F250 (L/D)

Part#	Total Change
23101	1/4 degree
23102	1/2 degree
23103	3/4 degree
23104	1 degree
23105	1-1/4 degree
23106	1-1/2 degree
23107	1-3/4 degree
23108	2 degree
23109	0 degree

CAMBER/CASTER SLEEVE

Sleeves change camber, caster or both at the same time. Remove the upper ball joint stud nut and break taper free between the stud and sleeve. Calculate the change and install correct sleeve.



APPLICATIONS: Dodge: 1994 -99 BR2500 4WD, BR3500 2WD/4WD. Ford 4WD: 1992 & up F350 Crew Cab Pickup, Some F250 4WD w/straight axle, 1999 & up 350, 450, 550, Ford 2WD: 1999 & up F450, 550 Crew Cab Pickup, Some F250 4WD.

Part#	Total Change
23131	1/4 degree
23132	1/2 degree
23133	3/4 degree
23134	1 degree
23135	1-1/4 degree
23136	1-1/2 degree

FORD 4WD CAMBER/CASTER SLEEVE

By installing the #23120 series sleeves you can change camber, caster or both at the same time. Simply remove the tire, cotter pin and upper ball joint stud nut and break the taper free between the stud and sleeve.



APPLICATIONS:

Ford 4WD: 1983-89 Ranger, Bronco II.

Part#	Total Change
23121	1/4 degree
23122	1/2 degree
23123	3/4 degree
23124	1 degree
23125	1-1/4 degree
23126	1-1/2 degree
23127	1-3/4 degree
23128	2 degree
23129	0 degree

Ford 2WD Camber Sleeve

The #23160 series changes camber only in 1/4 increments from 1/4 deg up to 2 degree. Remove the upper ball joint stud nut and break taper free between the stud and sleeve.



APPLICATIONS: Ford 2WD: 1982-86 F100, F150 w/ ball joint suspension, 1982-88 Ranger and Bronco II.

Part#	Total Change
23161	.25 degree
23162	.50 degree
23163	.75 degree
23164	1.00 degree
23165	1.25 degree
23166	1.50 degree
23167	1.75 degree
23168	2.00 degree



Ford 2 & 4WD Camber/Caster Sleeve

These popular sleeves are widely used to adjust caster and/or camber on many Ford 2WD/4WD trucks. To install, simply loosen and remove upper ball joint pinch bolt. Remove top snap ring if one is present.



APPLICATIONS: Ford 2WD: 1987 & up F350, 1987-96 F150, F250 (L/D), 1989-90 Bronco II, 1992 & up E150, E250, E350. 1991-94 Explorer, 1989 -97 Ranger, 1999 & up F250, F350 Super Duty Mazda 2WD

Part#	Total Change
23181	.25 degree
23182	.50 degree
23183	.75 degree
23184	1.00 degree
23185	1.25 degree
23186	1.50 degree
23187	1.75 degree
23188	2.00 degree
23189	2.25 degree
23190	2.50 degree
23191	2.75 degree
23194	3.50 degree

Ford F250, F350 Sleeves

Ford changed the axle design in 2005 on their Heavy Duty trucks. These sleeves correct camber and caster on the new 4x4 F250 & F350 Super Duty truck.

Part#	Total Change
23221	.25 degree
23222	.50 degree
23223	.75 degree
23224	1.00 degree
23225	1.25 degree
23226	1.50 degree
23227	1.75 degree
23228	2.00 degree



Ford F450, F550 Sleeves

Part#	Total Change
23232	.50 degree
23233	.75 degree
23234	1.00 degree

Jeep and Dodge Offset Ball Joint

APPLICATIONS: Jeep: 1984 & up 2WD/4WD Cherokee, Comanche; 1987 & up Wrangler; 1990 & up Renegade; 1984 & up 2WD/4WD downsize Wagoneer; 1993 & up Grand Cherokee. Dodge: 1994 & up BR1500 4WD & BR2500 (L/D) Pickups.

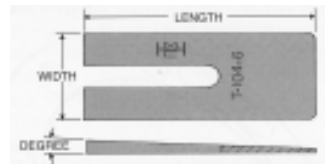


Part #	Total Change
23410	-1.5 to +1.5 deg
23520	1 deg - or +
23530	1-1/2 degree - or +
23540	+ or - 2 degree
23710	Cam/Cas +- .5 deg
23720	Cam/Cas +- 1 deg
23730	Cam/Cas +- 1.5 deg
23755	2 Cam/Bolt Set
23765	2 Cam/Bolt Set

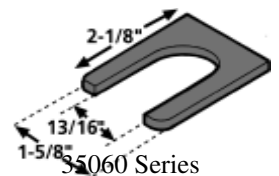
Assorted Sockets

87210 87215 87220

Single Shot Tandem Truck Shims



T107 Series Aluminum



S5060 Series

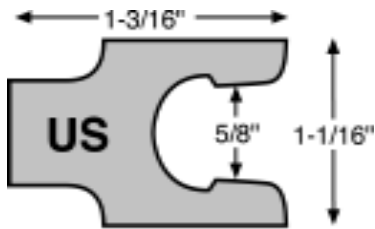
These universal shims are installed at the ends of torque rods to change toe and/or thrust angles on Freightliner, Hendrickson and Navistar heavy duty tandem trucks and trailers.

Part#	Width	Degree	Length
AL107-05	4"	1/2	6-1/2"
AL107-1	4	1	6-1/2"
AL107-2	4"	1-1/2	6-1/2"
AL107-3	4	2	6-1/2"
T107-4	4"	2-1/2	6-1/2"
T107-5	4	3	6-1/2"



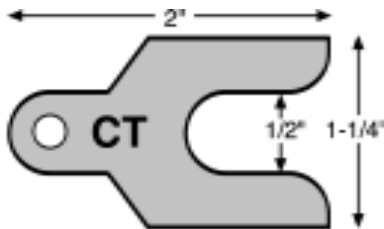
SPECIALTY PRODUCTS

Caster/Camber Shims



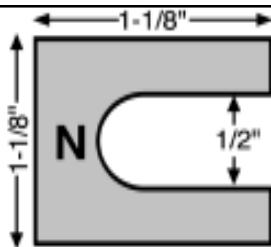
APPLICATIONS: 5/8" opening Control arm shaft mounting bolts up to 5/8" diameter.

Part#	Thickness	Qty
US164	1/64	50
US132	1/32	100
US116	1/16	100
US18	1/8	100



APPLICATIONS: 1/2" opening (for most imports) Control arm shaft mounting bolts up to 1/2" diameter.

Part#	Thickness	Qty
CT164	1/64	50
CT132	1/32	100
CT116	1/16	100
CT18	1/8	100
CT316	3/16	50



APPLICATIONS: Universal 1/2" slot shim

Part#	Thickness	Qty
N164	1/64	10
N132	1/32	100
N116	1/16	100
N18	1/8	100
N316	3/16	10

Tandem Shim-KW

Part#	Thickness	Qty
35001	1/32	6
35002	1/16	6
35003	1/8	6

Peterbilt Shim

Part#	Thickness	Qty
35010	1/32	6
35011	1/16	6
35012	1/8	6

Freightliner Shim

Part#	Thickness	Qty
35020	1/32	6
35021	1/16	6
35022	1/8	6

Volvo/White Shim

Part#	Thickness	Qty
35030	1/32	6
35031	1/16	6
35032	1/8	6

Tandem Shim-IHC

Part#	Thickness	Qty
35040	1/32	6
35041	1/16	6
35042	1/8	6

Dual Angle EZ Shim



Adjusts Camber and Toe with only one shim. These patented, two-piece shims are available individually or in MasterPaks of 25. Instruction sheets are included in each shim package.

Part#	Color
75200	Blue
75400	Grey
75800	Red



GM Camber Kit (pair)

This cam bolt kit changes camber up to 2-1/2degrees positive or negative. One kit covers both sides of the vehicle. Use wrench #85825 to adjust. MasterPaks are available for ordering and restocking.



APPLICATIONS: Buick: Century, Skylark, Chevrolet: Celebrity, Citation, Lumina APV, Oldsmobile: Ciera, Custom Cruiser FWD, Cutlass Cruiser, Omega, Silhouette APV, Pontiac: Phoenix, Transport APV, 6000, and rear of Pontiac Fiero.

Part#
82110

Camber Kits for Domestic/Import

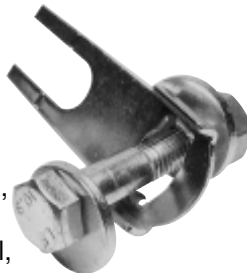
The EZ Cam(tm) is designed for non-slotted struts. It allows both positive and negative camber changes up to approximately 1° by replacing the upper O.E. strut/spindle bolt

See application charts for vehicle years.



Camber Kit (pair)

This cam bolt kit changes camber up to 2-1/2 degree positive or negative. It includes an adjusting plate to make the camber adjustment possible.



APPLICATIONS: Eagle: Medallion, Premier, Vision, Buick: Electra, Le Sabre, Park Avenue, Reatta, Regal, 95 Riviera, Skyhawk, Somerset,

Part#
82120
82135

EZ Wedge(tm) Camber Kits

The EZ Wedge kit replaces the upper O.E. strut/spindle bolt with a slightly smaller bolt, allowing room for movement

See application charts for vehicle years.



Part#	Description
84510	Wedge Kit 12 mm Struts

Chrysler Ball Joint Sockets

APPLICATIONS: 1-29/32" opening for Dodge.

APPLICATIONS: 2-1/8" opening for Chrysler.

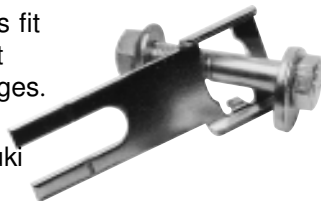


Part#
68880
68890

Import Camber Kits (pair)

These universal adjusting kits fit most front wheel drive import vehicles with 2-bolt strut flanges.

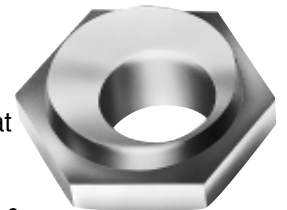
APPLICATIONS: Chevrolet, Daihatsu, Dodge, Ford, Suzuki, Geo, Mazda, Nissan and most other vehicles with 12mm strut bolts.



Part#
83410

Caster Kits for Twin I-Beams (pair)

These cam kits allow from approximately 2° caster adjustment positive or negative. Remove the radius arm bolt that connects to the I-beam.



APPLICATIONS: Ford 2WD & 4WD: Twin I-beam vehicles w/out stabilizer bar.

Part#
87250



SPECIALTY PRODUCTS

Taurus/Sable Sedan Rear Camber-Toe Kit

These four bushings allow up to 1.0 degree camber change and/or 1/2" toe change on both rear wheels of Ford Taurus and Mercury Sable Sedans.



APPLICATIONS: Ford: 1986 & up Taurus sedan, Mercury: 1986 & up Sable sedan.

Part#
87300

GM 2WD and 4WD Camber/Caster Kit

These heavy duty cams replace the upper control arm mounting bolts. Remove the O.E. bolts and replace with these cams, rotating them to provide up to 2degrees camber and/or caster adjustment.



APPLICATIONS: GM: 1988-99 1500, 2500, 3500 C & K series 2WD/4WD trucks, 1990 & up Safari AWD Van. Chevrolet: 1990 & up Astro AWD Van.

Part#
87400

Explorer Camber/Caster Kit(4)

This set of 4 cams allows for quick installation without having to remove the upper control arm bolt. Change camber and caster up to 1.75 degrees. One kit covers both sides of the vehicle. Use wrench #87155 to adjust.



APPLICATIONS: Ford: 1995 - up 2WD & 4WD Explorer, 1998 & up 2WD & 4WD Ranger. Mercury: 1995 - up 2WD & 4WD Mountaineer. Mazda: 1998 2WD & 4WD B-Series Pickup.

Part#
87310

Explorer Camber/Caster Kit

The new Ford Explorer has a torsion bar suspension with limited caster and no camber adjustment. This kit will provide up to 2degrees positive or negative camber/caster adjustment



APPLICATIONS: Ford: 1995 - up 2WD & 4WD Explorer, 1998 & up 2WD & 4WD Ranger. Mercury: 1995 - up 2WD & 4WD Mountaineer. Mazda: 1998 2WD & 4WD B-Series Pickup.

Part#
87500

F150/250 (L/D) 2/4WD Camber/Caster Kit

Use this new kit to change caster and/or camber on the new F150, F250 (L/D), Expedition and Navigator. Merely replace the existing upper control arm mounting bolts with these cam bolts for caster/camber changes up to 2.0j.

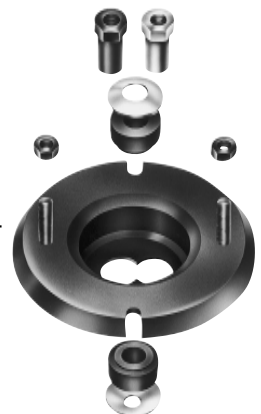


APPLICATIONS: Ford: 1997 - up F150, F250 (L/D), 1997 - up 2WD & 4WD Expedition. Lincoln: 1997 - up 2WD & 4WD Navigator

Part#
87380
87385

Ford Front Camber Kits

These adjustable upper strut bearing plates replace non-adjustable O.E. plates to allow camber changes up to 1degree positive or negative, and provide easy future changes.



APPLICATIONS: Ford: 1984-94 Tempo, Topaz, 1986-90 Escort, 1986-88 EXP, 1986-87 Lynx.

Part#
89605

